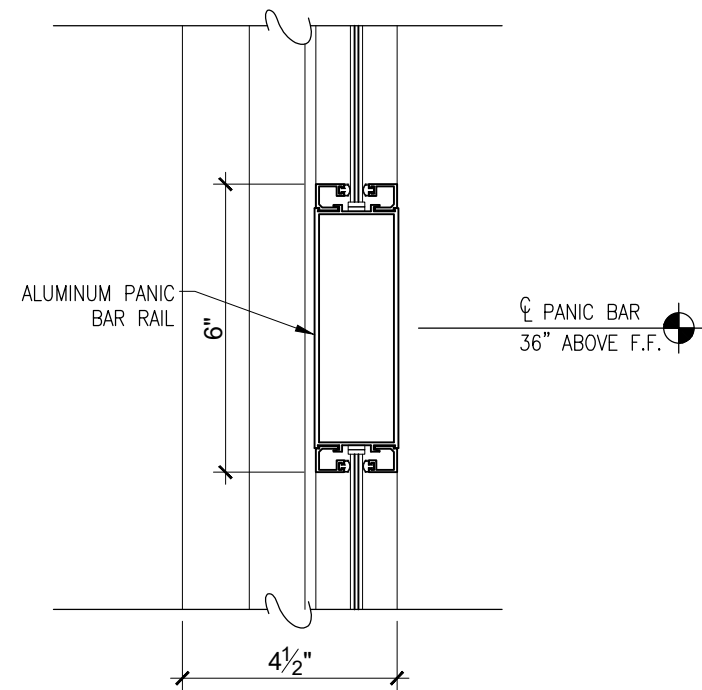
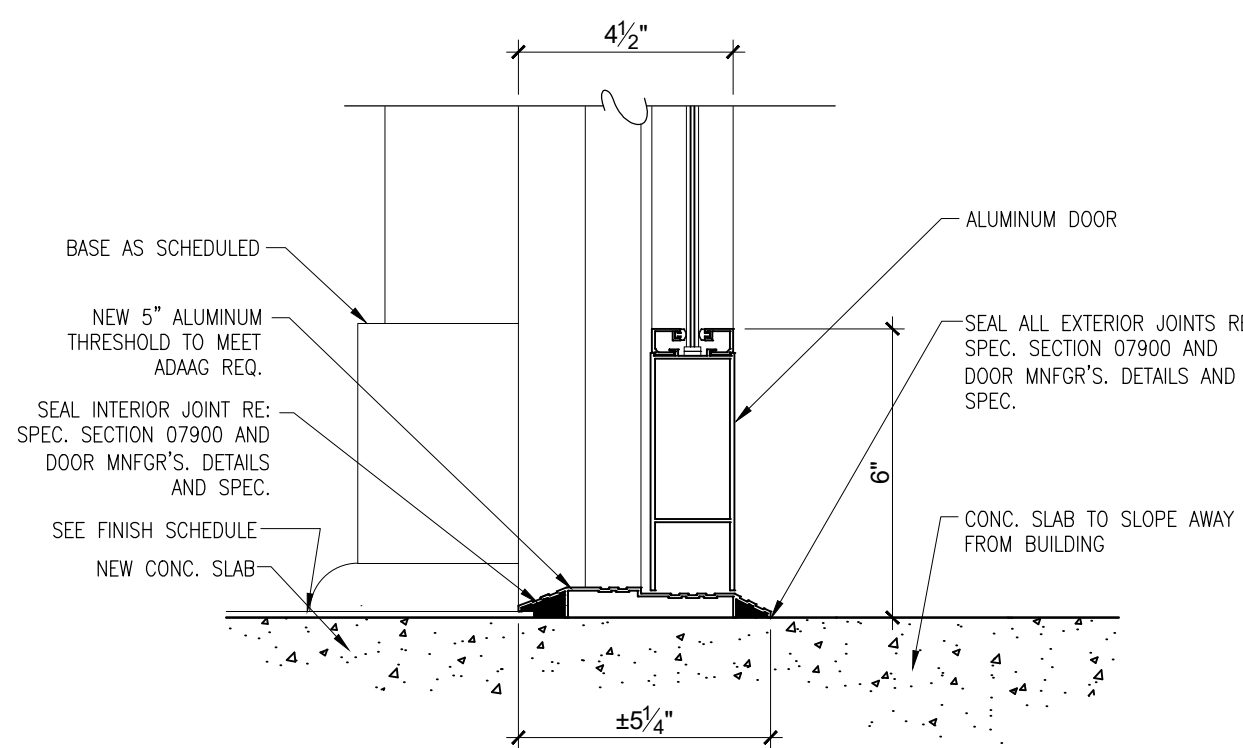


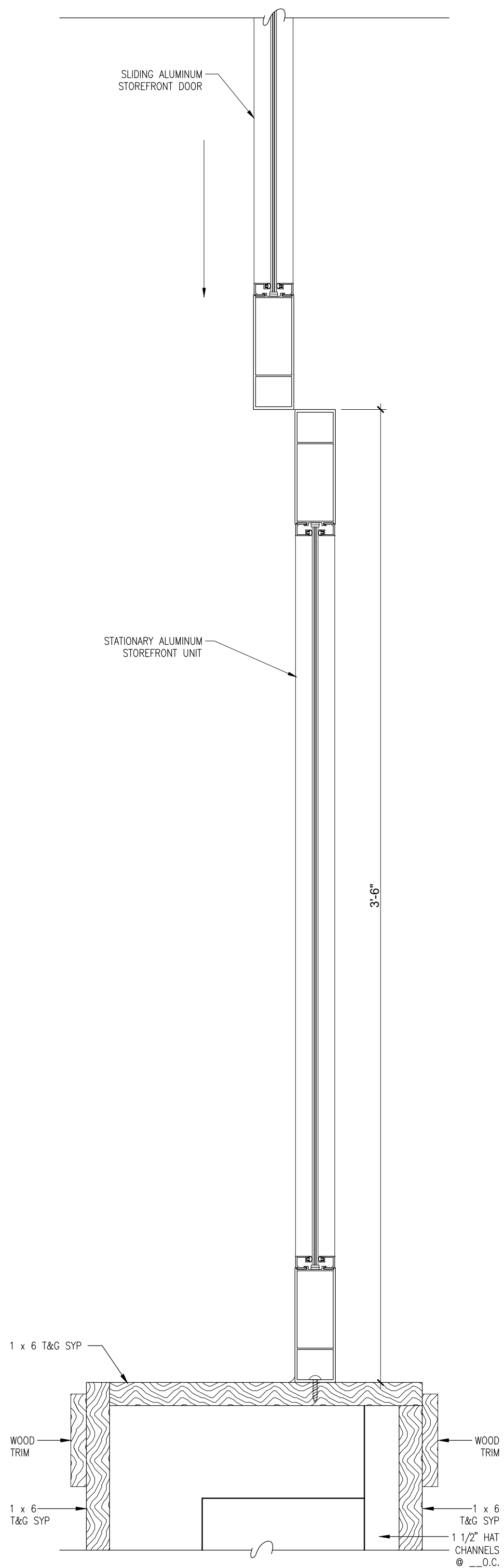
1 HEAD DETAIL OF DOORS 1,2,3,4 & 5
SCALE= 3"= 1'-0"



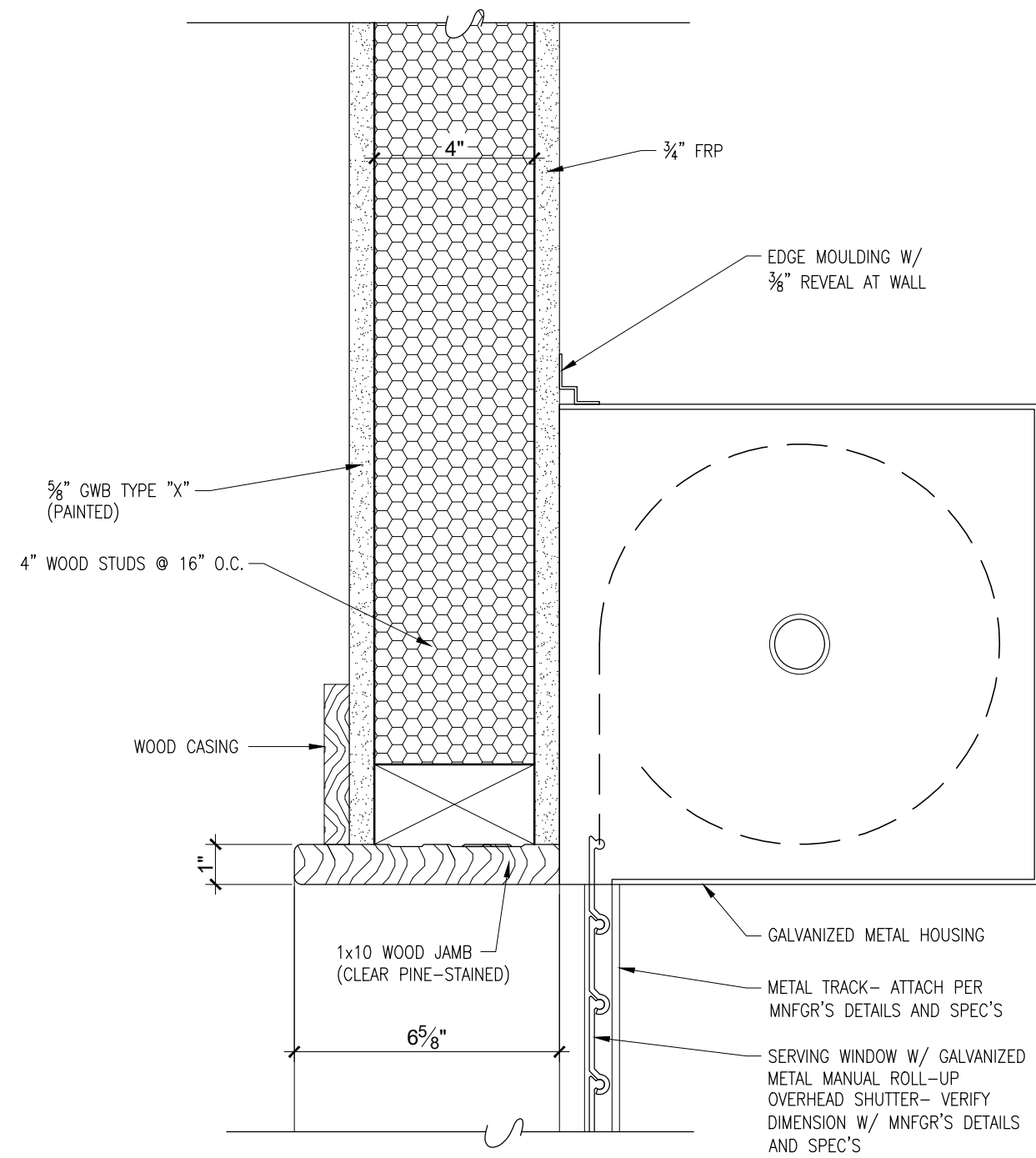
2 DETAIL OF INTERMEDIATE MULLION
SCALE= 3"= 1'-0"



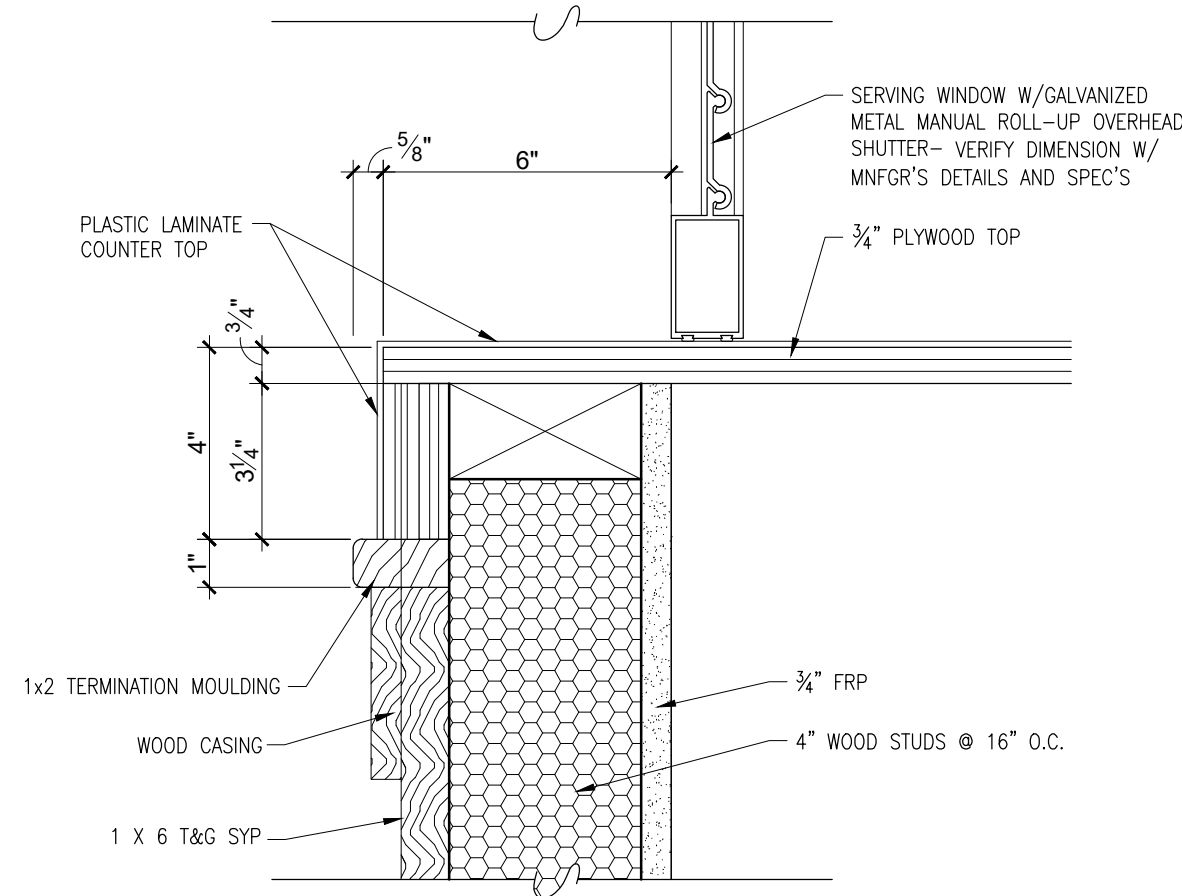
3 BASE DETAIL AT DOOR 1,2,3,4, & 5
SCALE= 3"= 1'-0"



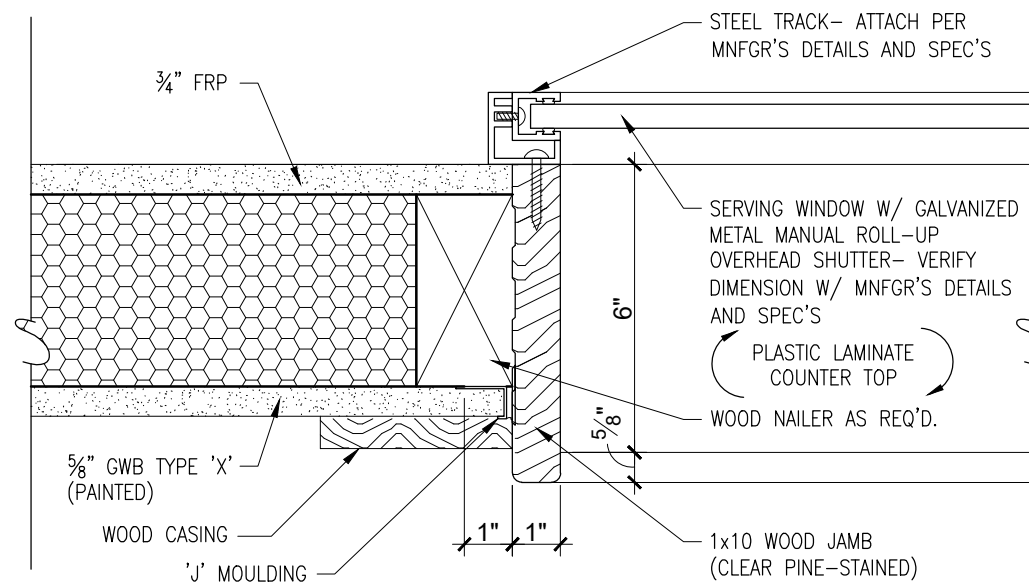
4 JAMB DETAIL AT SLIDING DOORS 4 & 5
SCALE= 3"= 1'-0"



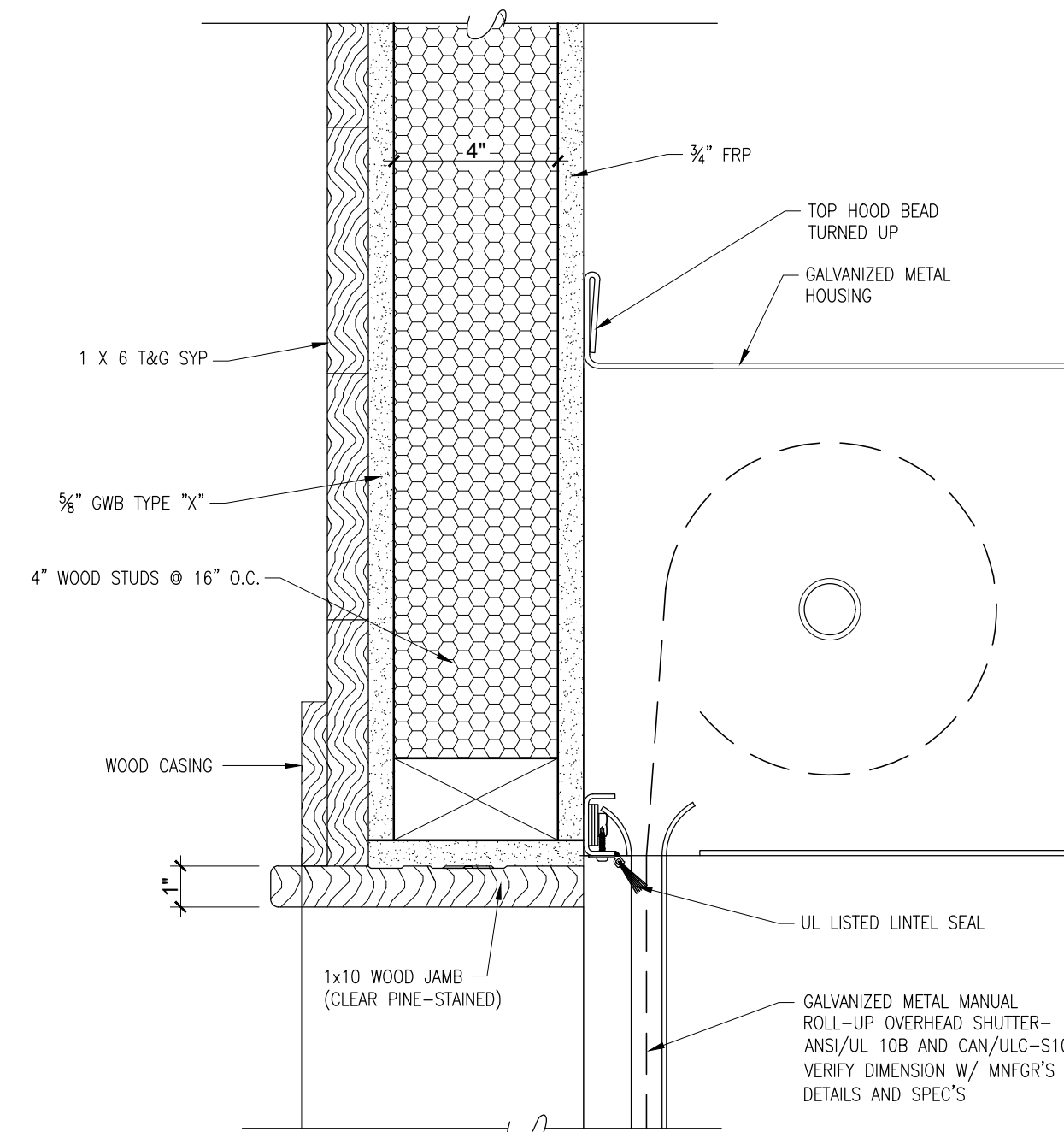
5 HEAD DETAIL OF OVERHEAD SHUTTER AT SERVING WINDOW #16
SCALE: 3"= 1'-0" INTERIOR



6 JAMB DETAIL OF OVERHEAD SHUTTER AT SERVING WINDOW #16
SCALE: 3"= 1'-0" INTERIOR

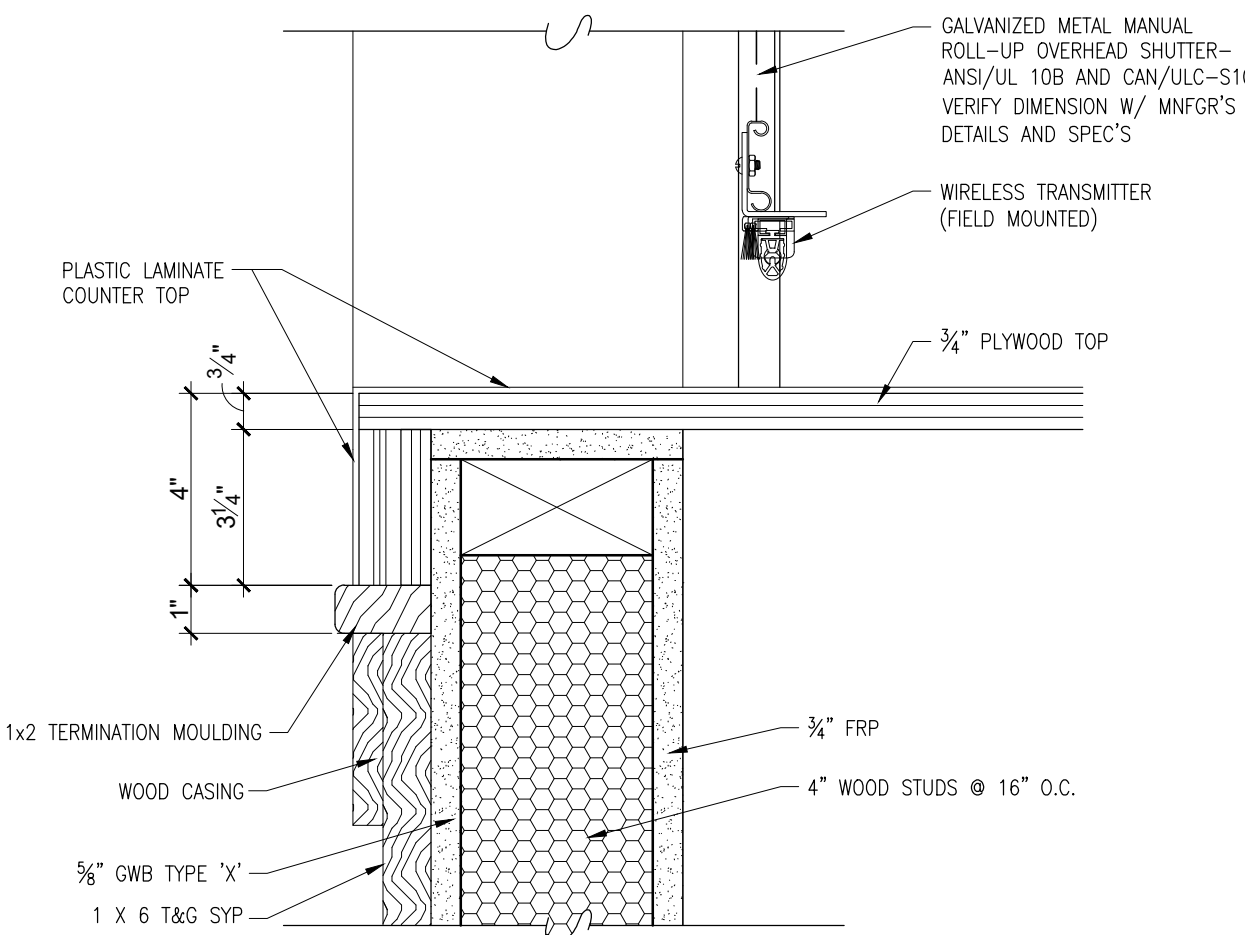


7 SILL DETAIL OF OVERHEAD SHUTTER AT SERVING WINDOW #16
SCALE: 3"= 1'-0" INTERIOR



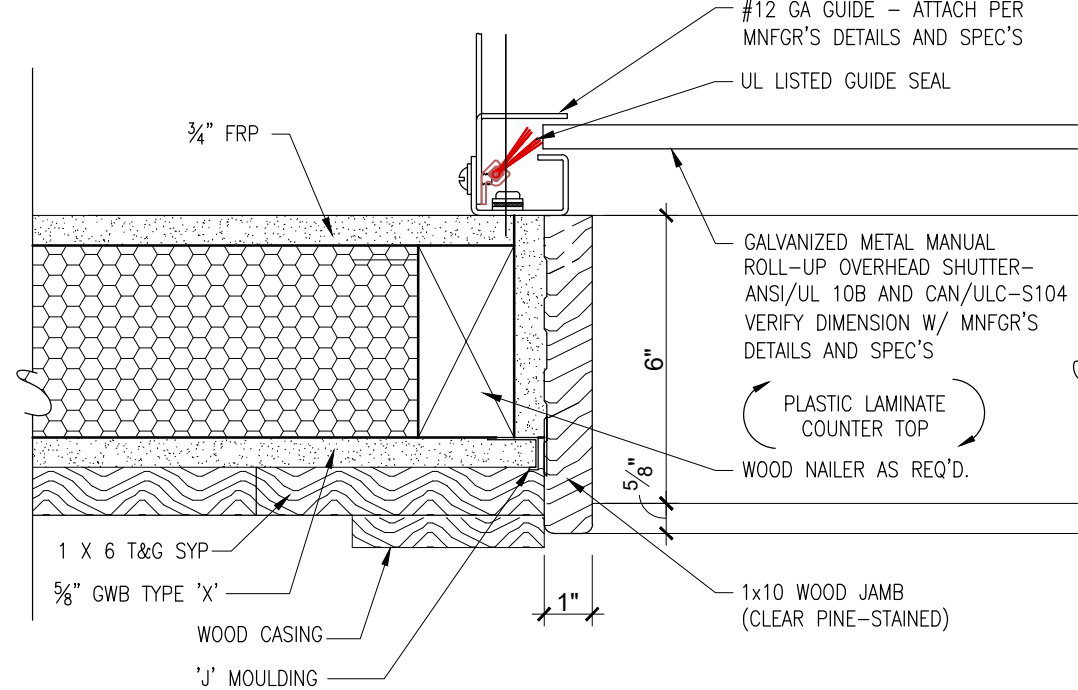
8 HEAD DETAIL OF OVERHEAD SHUTTER AT SERVING WINDOW #17
SCALE: 3"= 1'-0" INTERIOR - RATED 1 HOUR

ALTERNATE #2



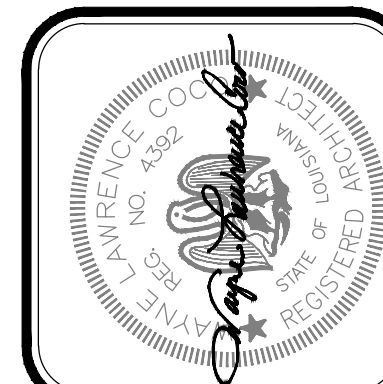
9 JAMB DETAIL OF OVERHEAD SHUTTER AT SERVING WINDOW #17
SCALE: 3"= 1'-0" INTERIOR - RATED 1 HOUR

ALTERNATE #2



10 SILL DETAIL OF OVERHEAD SHUTTER AT SERVING WINDOW #17
SCALE: 3"= 1'-0" INTERIOR - RATED 1 HOUR

ALTERNATE #2



Project No.	0225
Drawn By:	BP
Approved By:	WAYNE L. COCO
Preliminary Date:	MARCH 31, 2026
Release Date:	
File:	

WAYNE LAWRENCE COCO, AIA, ARCHITECT, L.L.C.
P.O. BOX 111 - 510 MAIN ST.
SIMMESPORT, LOUISIANA 71369
318.359.3732 / FAX 318.941.2821

Coco & Company
a professional architectural company

FUTURE FARMERS OF AMERICA
CONFERENCE CENTER

MANSURA, LOUISIANA AT OLD RIVER